



## East Hills Public School

Lucas Road East Hills NSW 2213

Phone: 9773 8468

[easthills-p.school@det.nsw.edu.au](mailto:easthills-p.school@det.nsw.edu.au)

[www.easthills-p.schools.nsw.edu.au](http://www.easthills-p.schools.nsw.edu.au)

# East Hills Secondary Schools Community Group

## Year 7 2022 intake area adjustments

### How to use this document:

Please use the information in this document to help you tailor your own communications to inform parents, staff and students in a way that's most effective for your school.

### It contains the following:

- Key information
- Snapshot of school impacts
- Maps to highlight intake areas
- Preview of School Finder content
- FAQs
- Communication touchpoint suggestions

Information in the following pages is for year 6 parents whose children will be starting year 7 in 2022.

Please read through the information and if you have any queries ring East Hills Public School on 9773 8468.

# Key information

This is critical information about what's happening, where and when information will be available to help you populate your communication channels.

- The intake areas for **Picnic Point HS, Menai HS, Sir Joseph Banks HS, East Hills Girls Technology HS and East Hills Boys HS** will change for **prospective Year 7 students** in the East Hills area to provide a choice of both co-ed and single-sex options in 2022.
- The changes will affect **Year 6 students** completing the **High School Expression of Interest (EOI) process** in Term 1, 2021 for high school entry in Term 1, 2022 in the following primary schools:

Milperra PS	East Hills PS
Panania PS	Picnic Point PS
Tower Street PS	Revesby South PS
Padstow Heights PS	Padstow Park PS
Panania North PS	Revesby PS
Padstow North PS	

- The new intake areas apply to Year 7 enrolments in 2022 and will gradually extend to all grades by 2025.
- **Existing 2021 intake areas will remain in place for Years 8 to 12 in 2022.**
- Enrolment applications for older students or students living outside of the new intake area, will be considered on a case-by-case basis in line with the Department's enrolment policy.
- Parents with children in Year 6 completing the High School Expression of Interest (EOI) process in Term 1, 2021 for high school entry in Term 1, 2022 will need to know about these changes.
- High School Expressions of Interest (EOIs) will be open from **March 10, 2021.**
- Year 6 & 7 coordinators in Primary Schools must also know about these changes to assist parents and carers.
- Everyone can visit **[schoolfinder.education.nsw.gov.au](https://schoolfinder.education.nsw.gov.au)** from **18 February** for updated information.



## Primary feed snapshot

You can use the information in this snapshot to help staff and parents understand the impacts in your own school.

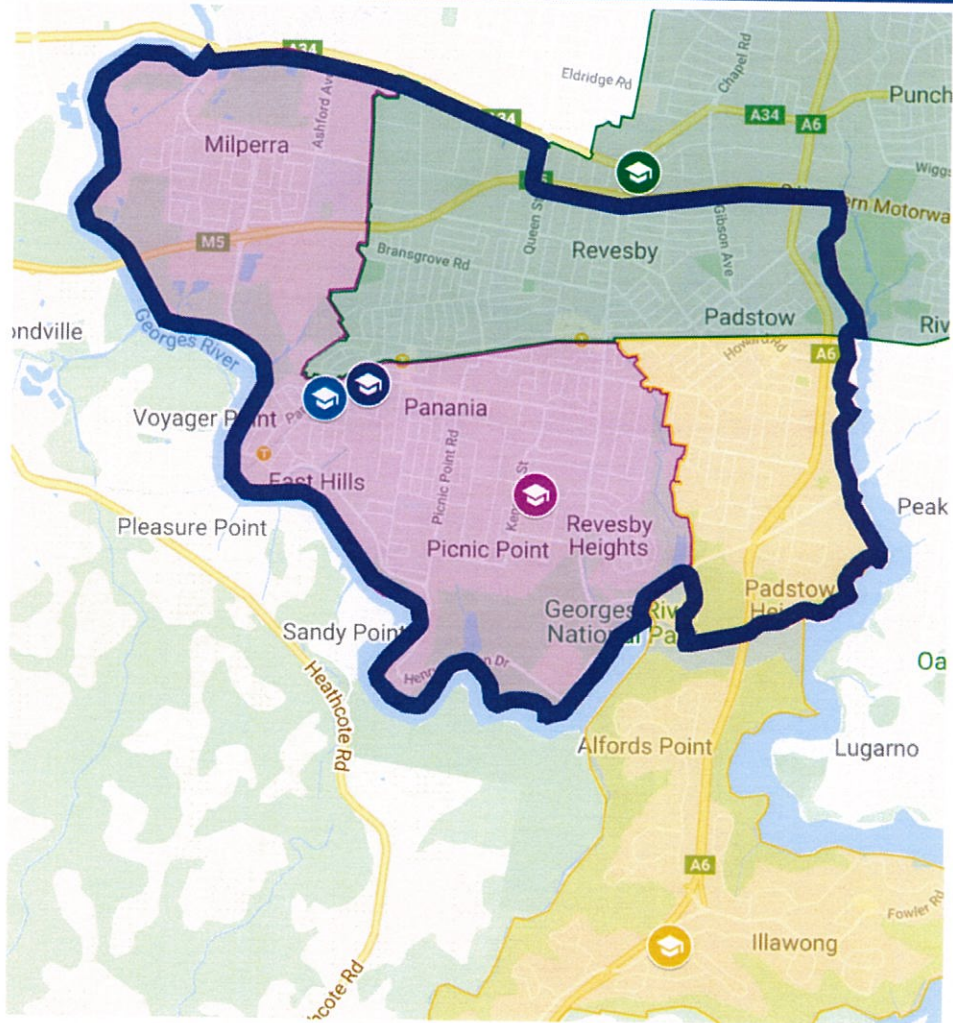
Primary School	Current High School	<b>NEW</b> High School Options
Milperra PS East Hills PS Tower Street PS	East Hills Girls Technology HS + East Hills Boys HS <b>only</b>	Picnic Point HS + East Hills Boys HS and East Hills Girls Technology HS
Panania PS	<ul style="list-style-type: none"> <li>Most have East Hills Girls Technology + East Hills Boys <b>only</b></li> <li>Some have Picnic Point HS <b>only</b></li> </ul>	Picnic Point HS + East Hills Boys HS and East Hills Girls Technology HS
Picnic Point PS Revesby South PS	Picnic Point HS <b>only</b>	Picnic Point HS + East Hills Boys HS and East Hills Girls Technology HS
Padstow Heights PS	Picnic Point HS <b>only</b>	Menai HS + East Hills Boys HS and East Hills Girls Technology HS
Padstow Park PS	South of railway East Hills Boys and East Hills Girls Technology HS <b>only</b>	<b>South of railway:</b> Menai HS + East Hills Girls Technology HS and East Hills Boys
	North of railway Sir Joseph Banks HS <b>only</b>	<b>North of the railway:</b> Sir Joseph Banks HS + East Hills Girls Technology HS and East Hills Boys
Panania North PS	East Hills Girls Technology + East Hills Boys <b>only</b>	Sir Joseph Banks HS + East Hills Boys HS and East Hills Girls Technology HS
Revesby PS Padstow North PS	Sir Joseph Banks HS <b>only</b>	Sir Joseph Banks HS + <i>All addresses south of the M5 to have East Hills Girls Technology HS + East Hills Boys as well as SJBHS</i>



# Map showing intake update

You can use these maps to add in your school communication updates.

**East Hills Boys and East Hills Girls Technology intake area expansion highlighted by a dark blue outline to provide single-sex options to all in this area**



## Co-ed option Picnic Point HS

- Milperra PS
- East Hills PS
- Panania PS
- Picnic Point PS
- Tower Street PS
- Revesby South PS

## Co-ed Option Menai HS

- Padstow Heights PS
- Padstow Park PS (south of railway only)

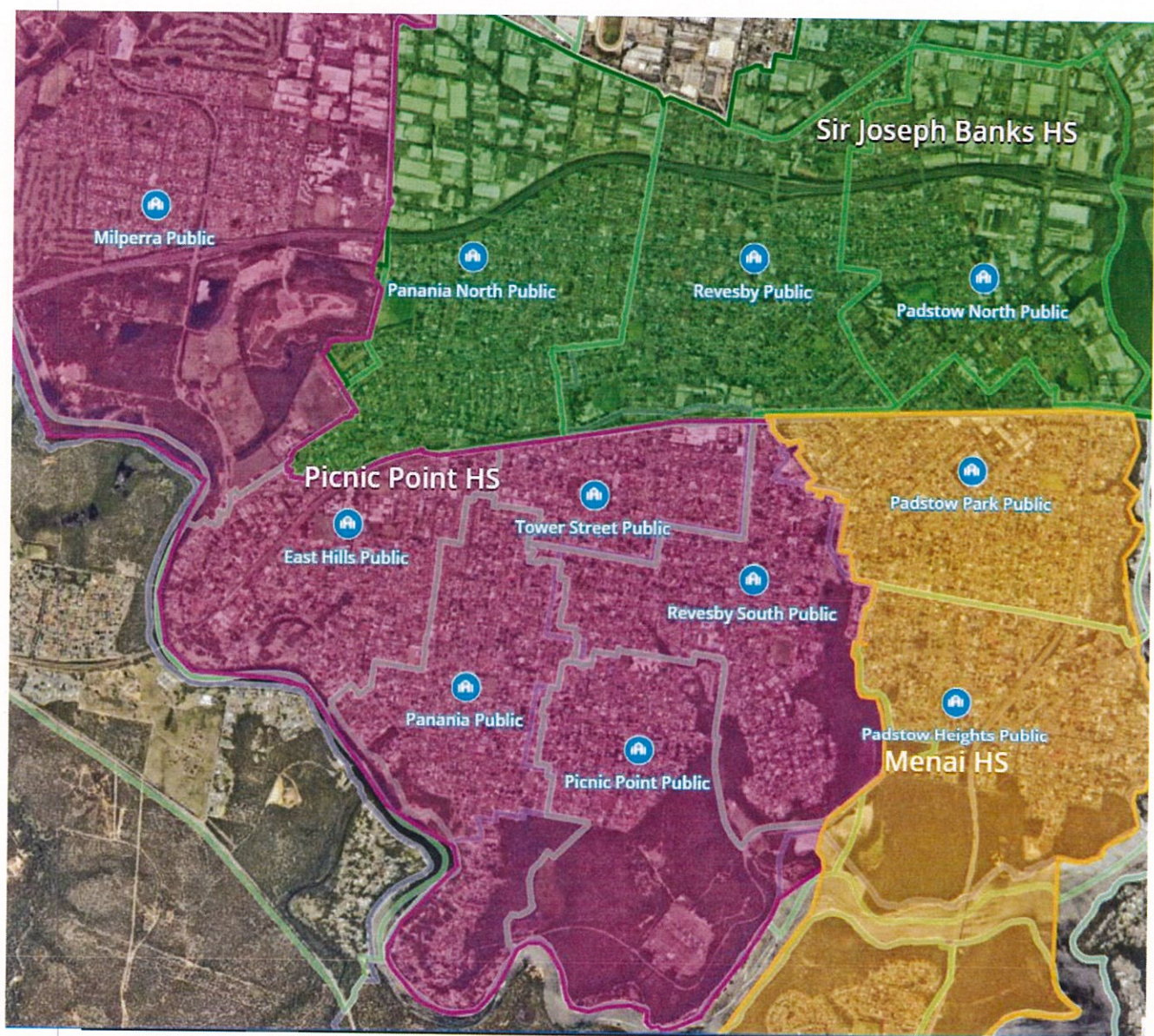
## Co-ed Option Sir Joseph Banks HS

- Panania North PS
- Revesby PS
- Padstow North PS
- Padstow Park PS (north of railway only)



**Picnic Point HS will be the co-ed option and East Hills Boys and East Hills Girls Technology high schools will be the single-sex options for:**

1. Milperra PS
2. East Hills PS
3. Tower Street PS
4. Panania PS
5. Picnic Point PS
6. Revesby South PS





## FAQs

Use this information to provide to parents and school staff as part of any parent letter or perhaps hand out at the P&C meeting.

### **Why have the intake areas changed for our school?**

Historically, families living in the East Hills area were offered a choice of either co-educational or single-sex high schools, not both. After an analysis of demographic and enrolment trends with consideration given to each school's permanent accommodation size, intake areas are being adjusted to ultimately offer both **co-educational and single sex options, beginning with Year 7 enrolments in 2022.**

### **What is the new intake area? How do I find out which one I live in?**

The [School Finder](https://schoolfinder.education.nsw.gov.au) website has been updated with the new intake area boundaries. Go to [schoolfinder.education.nsw.gov.au](https://schoolfinder.education.nsw.gov.au) to view them.

### **Will my child/children need to transfer to a different school because of this change?**

No.

### **Who does the change apply to?**

The new intake area **only** applies to Year 7 enrolments in 2022 but will gradually extend to all grades by 2025. The existing 2021 intake area remains in place for Years 8-12 in 2022.

### **Will siblings have to attend different schools?**

Enrolment applications for older students or students living outside of the new intake area, will be considered on a case-by-case basis in line with the Department's enrolment policy.

Other circumstances involving siblings will be considered in line with the Department's enrolment policy guidelines.